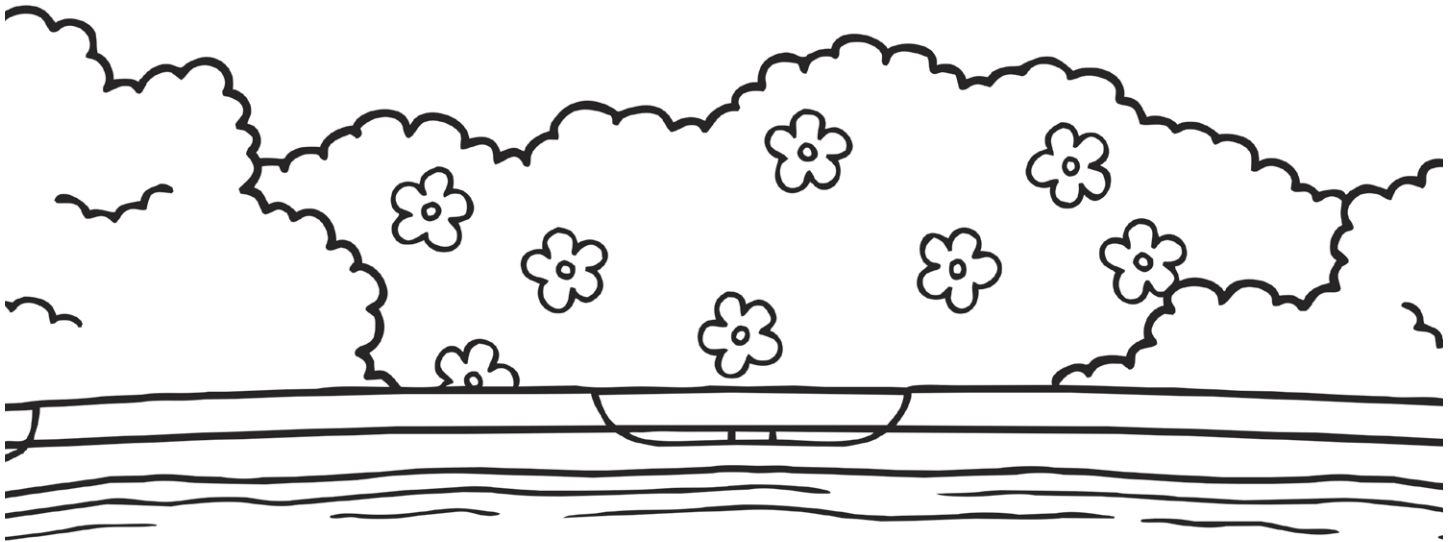


Pool Safety

slowly	jump on	push
flotation	gate	shallow
lifeguard's	choke	adult



1. Never open the _____ or climb the pool fence.
2. Always have an _____ with you when you are in the pool.
3. Never jump into the _____ end of the pool.
4. Walk _____ around the edge of the pool.
5. Wear a _____ device if you are not confident.
6. Do not _____ people into the pool or _____ people in the pool.
7. Do not eat or chew gum in a pool as you could _____.
8. Always follow the pool rules and obey the _____ directions.



Pool Safety Answers

1. Never open the **gate** or climb the pool fence.
2. Always have an **adult** with you when you are in the pool.
3. Never jump into the **shallow** end of the pool.
4. Walk **slowly** around the edge of the pool.
5. Wear a **flotation** device if you are not confident.
6. Do not **push** people into the pool or **jump on** people in the pool.
7. Do not eat or chew gum in a pool as you could **choke**.
8. Always follow the pool rules and obey the **lifeguard's** directions.